

NCAT Pavement Test Track



- Sustainable Technologies in Thin Overlays

Background

- Cost of mix materials continues to increase
- “Screenings” stockpiles are accumulating
- Smaller NMAS mixes used for light traffic

- Can “screenings” mixes support heavier traffic?
- Can “screenings” mix sustainability be improved?

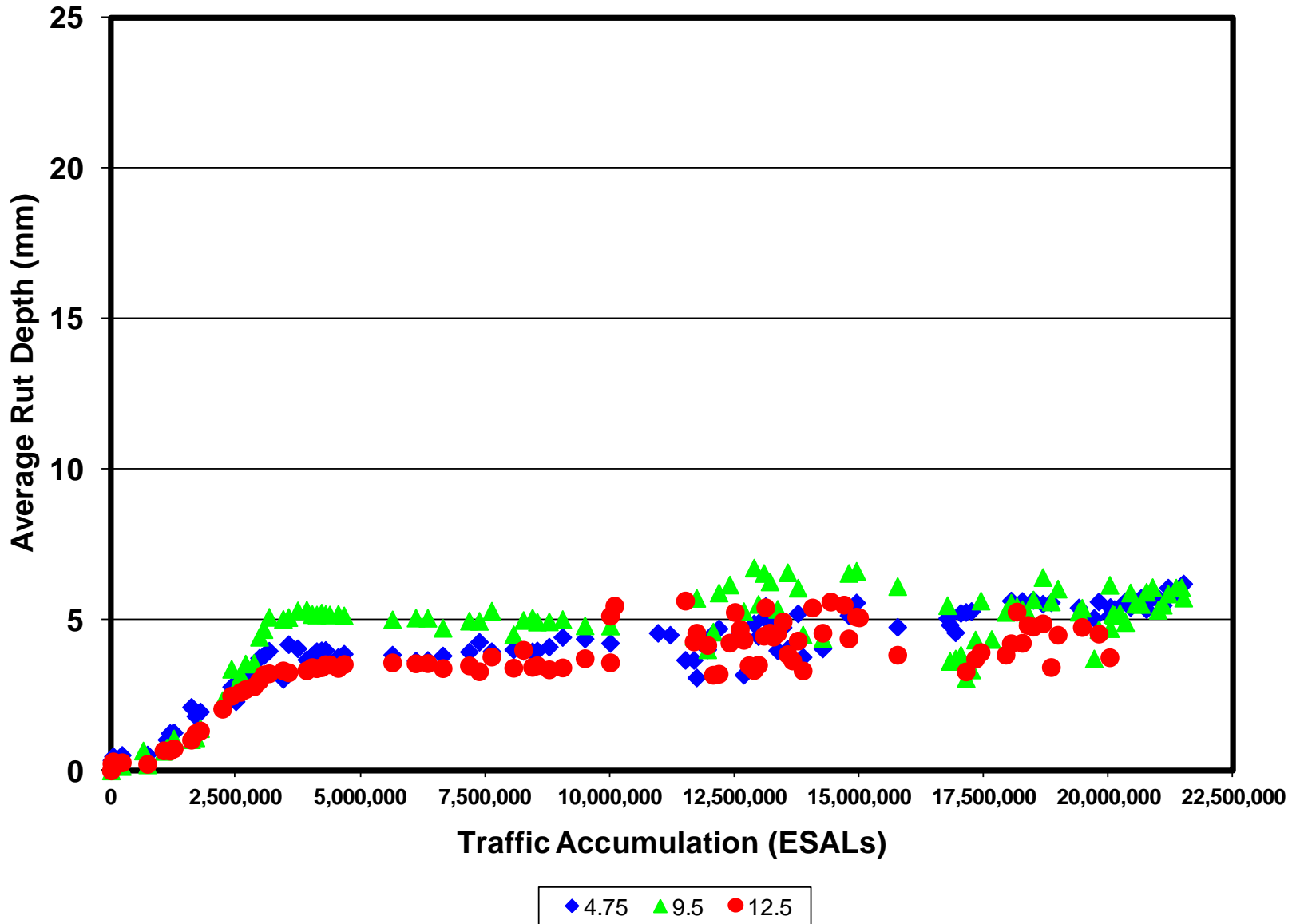
2003 NCAT Pavement Test Track



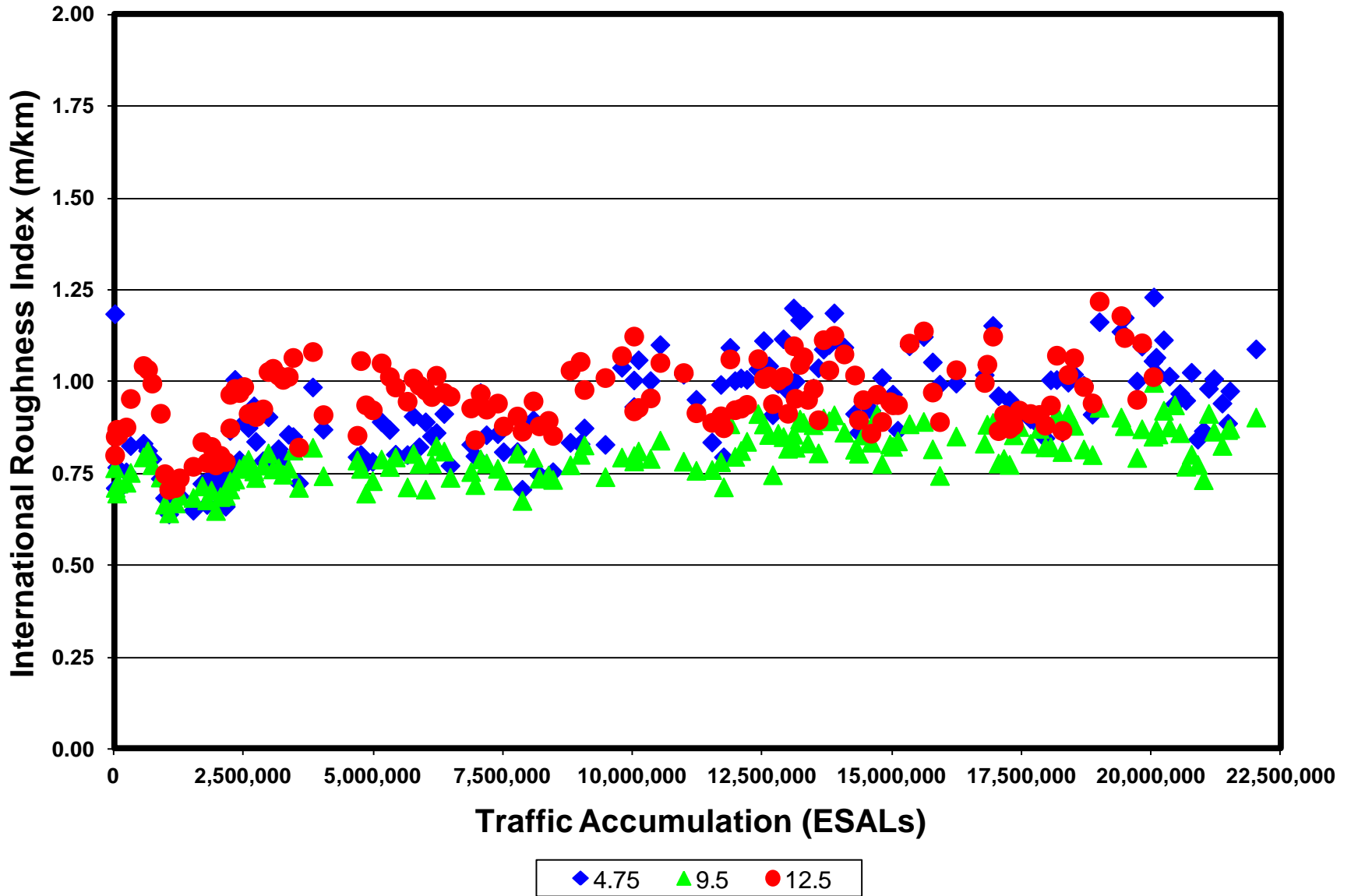
4.75 NMMAS Mix in West Curve



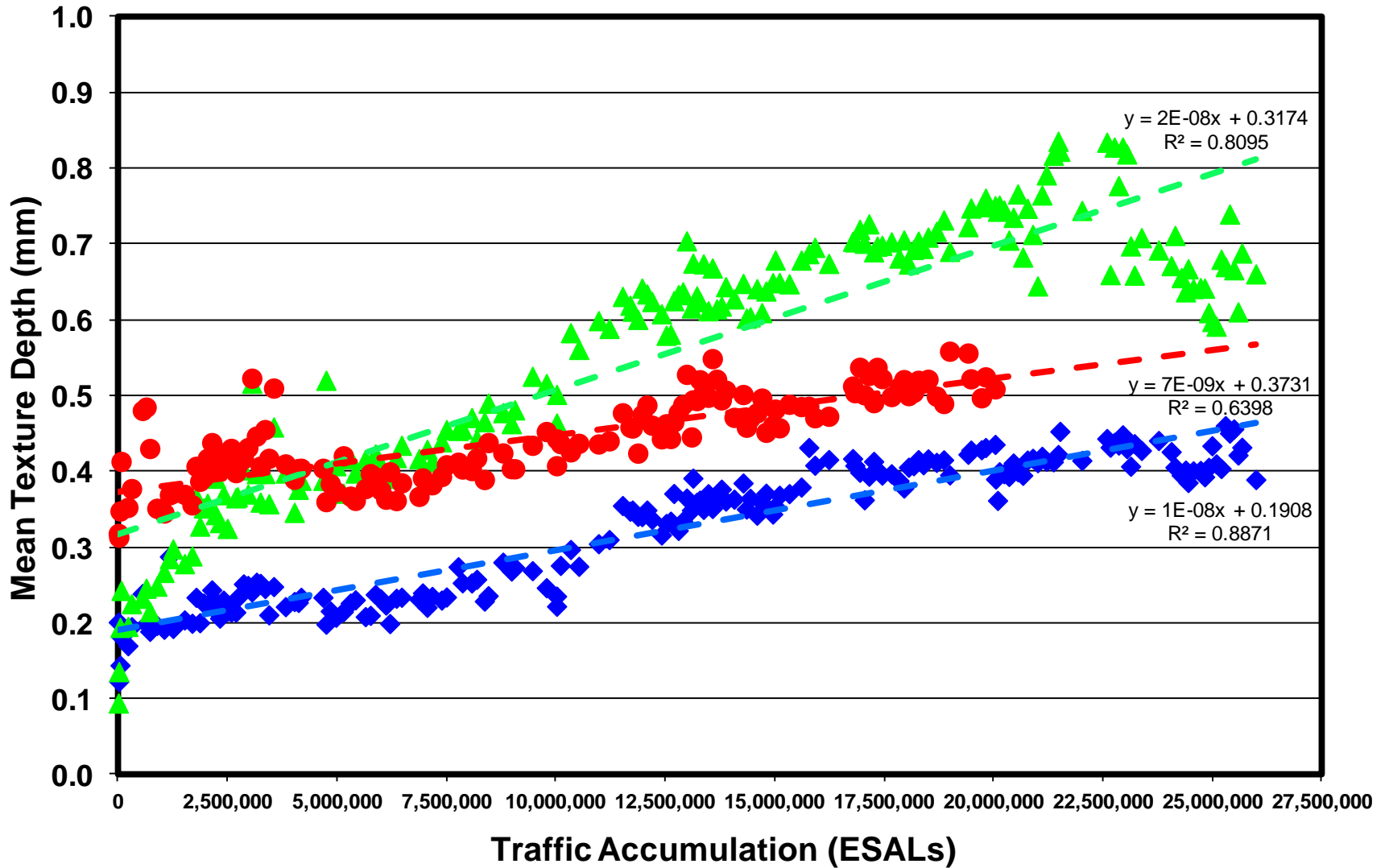
Rutting



Roughness

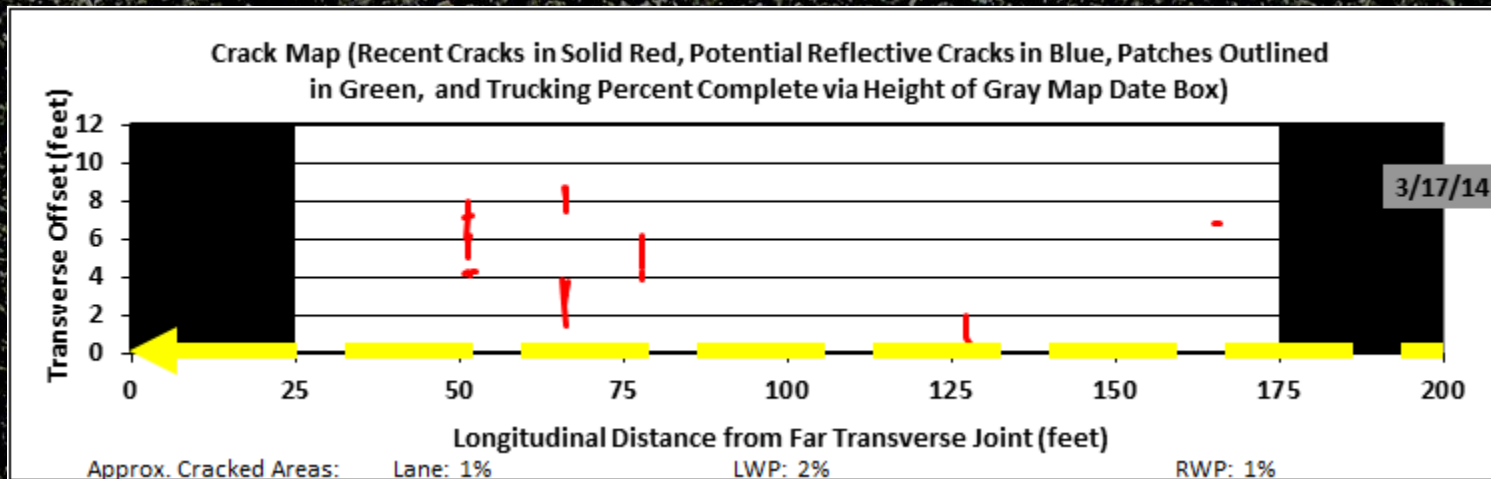


Raveling



◆ 4.75 ▲ 9.5 ● 12.5

9.5 mm NMAS Cracking

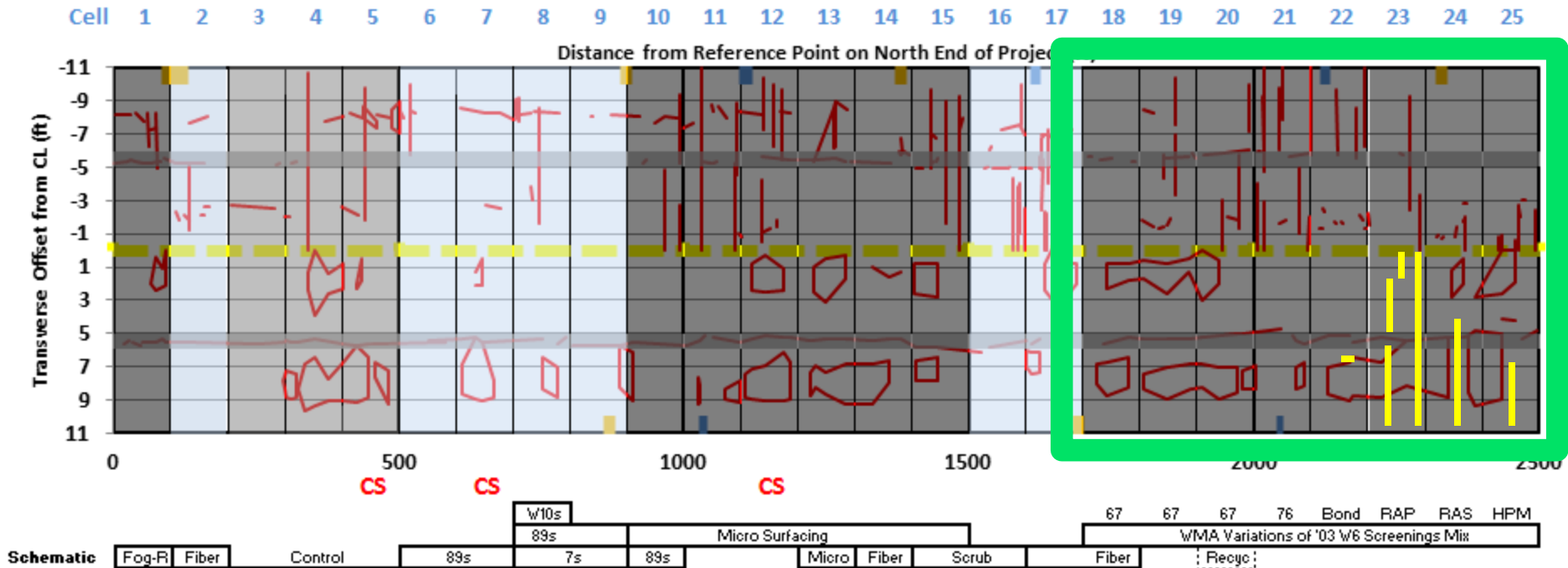


Thin-Lift Asphalt Pavement

NCAT West Curve Cam 1970-01-06 23:43:51

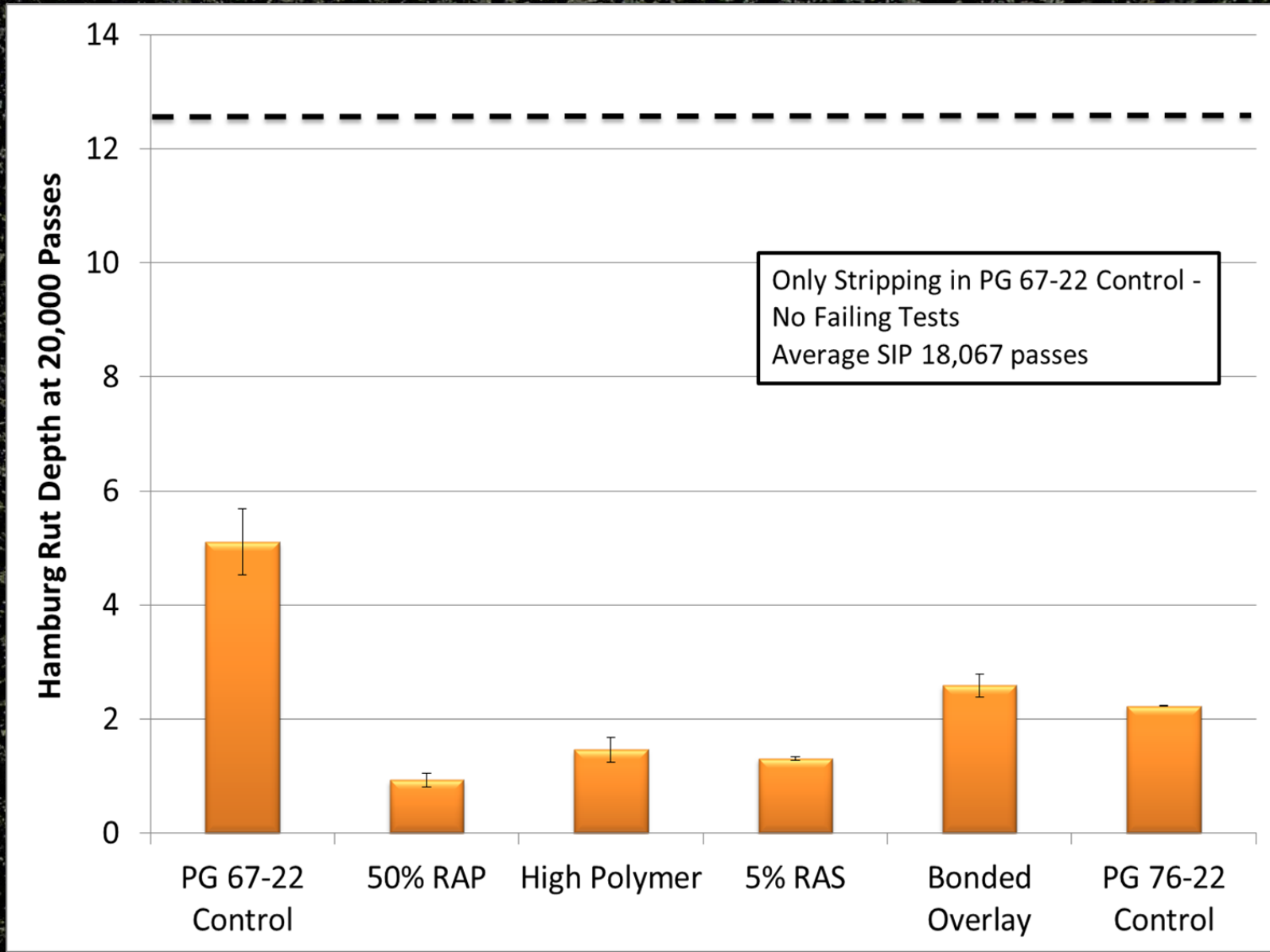


Preservation Sections on Lee Road 159

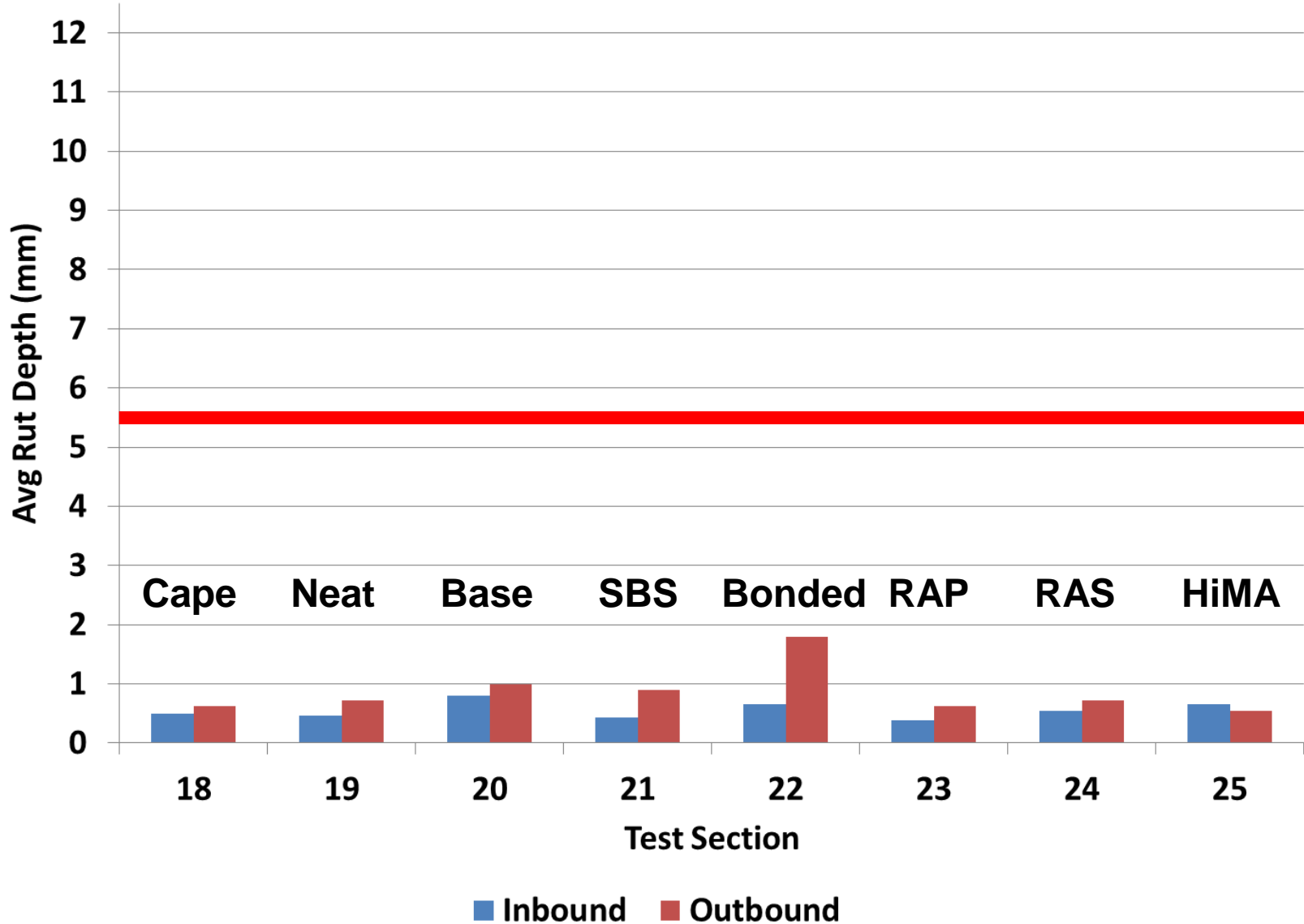


18	19	20	21	22	23	24	25
Cape	67	CCPR	76	Bond	RAP	RAS	HiMA

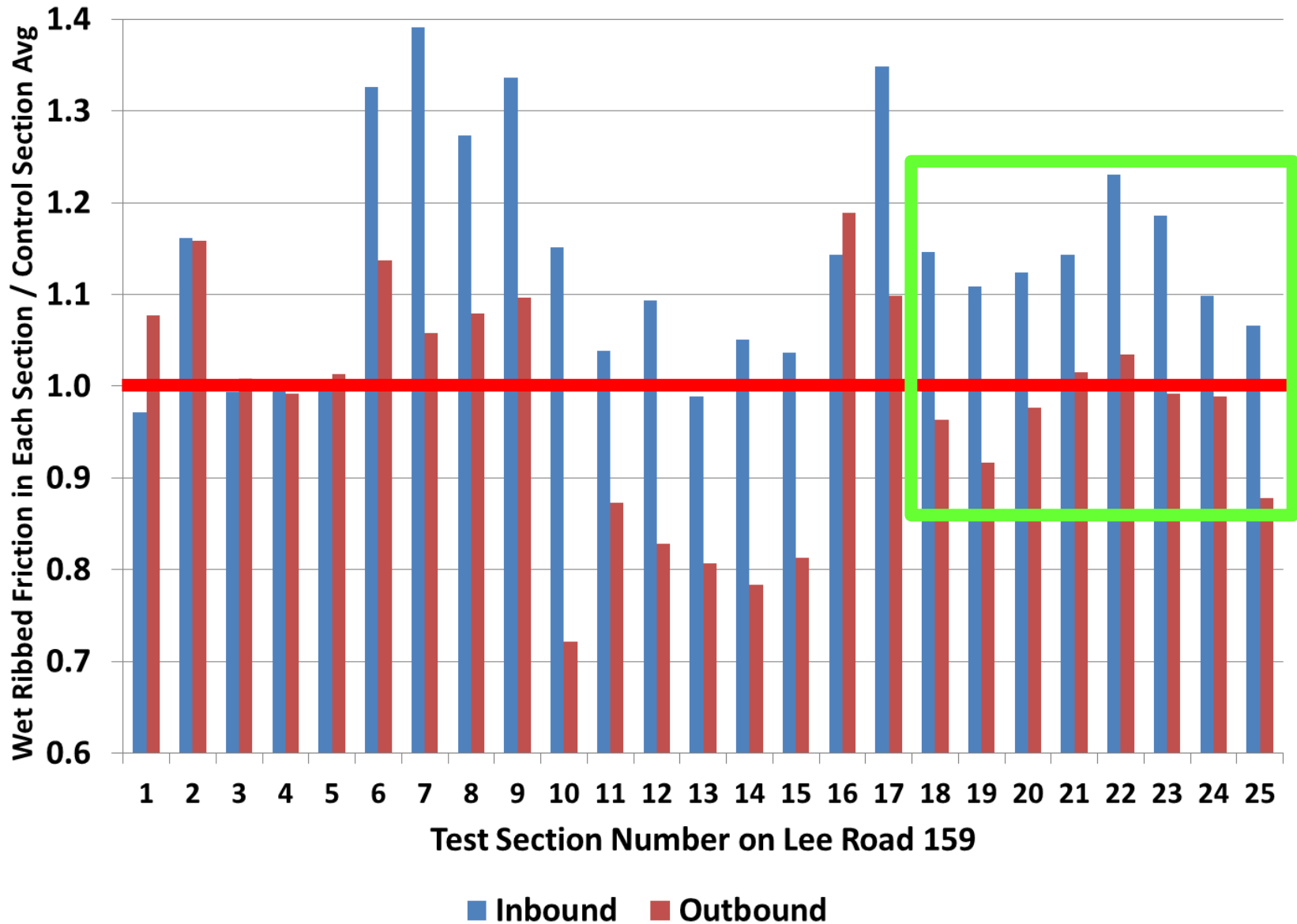
Laboratory Rut Depths



Rut Depths on Lee Road 159



Friction on Lee Road 159



Macrotexture Concerns



Conclusions & Recommendations

- Track Performance comparable to both 9.5 & 12.5
- Durability of 4.75 NMAS actually better than 9.5
- Passed ultimate torture test in winter 2013
- High volume road applications are possible
- Sustainability improved with neat AC, RAP, RAS
- Good thin overlay performance on Lee Road 159...

www.pavetrack.com



Performance



- Home
- Sponsors
- Information
- Construction
- Trucking
- Performance

Click here for [the official NCAT web site](#), [Tracks in US](#), or [Tracks Worldwide](#)

Opelika, AL
Get the 10 day forecast

61°F
Cloudy

Feels Like: 61°F
Humidity: 81%
Wind: SE at 8 mph

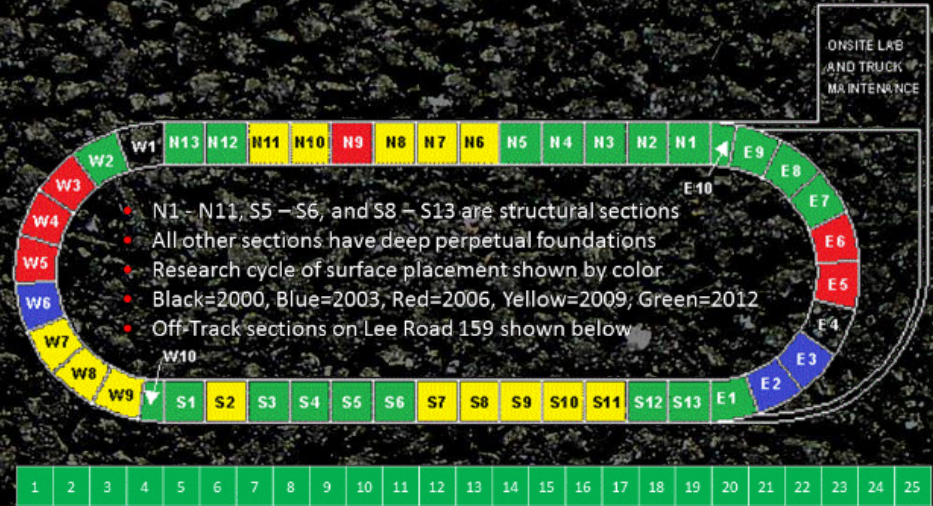
Enter city/zip **GO!**

The Weather Channel
Hit the Road
weather.com Travel Top 10s
Weather at 30,000 feet

HOTLINKS to [download PAVE reports](#), [review upcoming NCAT training courses](#), [query historical weather data](#), [view current color radar](#) or [preview local forecast](#)

0. ESALs as of 2300 hours on

Performance data for each section can be viewed by positioning your mouse over the section in question and left-clicking. Based on feedback from our research sponsors, the performance reports have been revised to include crack maps. The 2009 performance reports are now a fully integrated and active part of the web presentation.



2015 Pavement Test Track Conference

March 3-5, 2015

The Hotel at Auburn University
and Dixon Conference Center
Auburn, Alabama

- ▶ WMA & High RAP/RAS/GTR Mixes
- ▶ Optimized Structural Design

- ▶ Pavement Preservation Implementation

Official registration information will soon be available at www.ncat.us



at AUBURN UNIVERSITY

Questions ?



www.ncat.us

Dr. R. Buzz Powell, PE

Assistant Director & Test Track Manager

277 Technology Parkway
Auburn, AL 36830

Phone: (334) 844-6857
Cell: (334) 750-6293

Email: buzz@auburn.edu

Web: www.pavetrack.com

Twitter: www.twitter.com/pavetrack